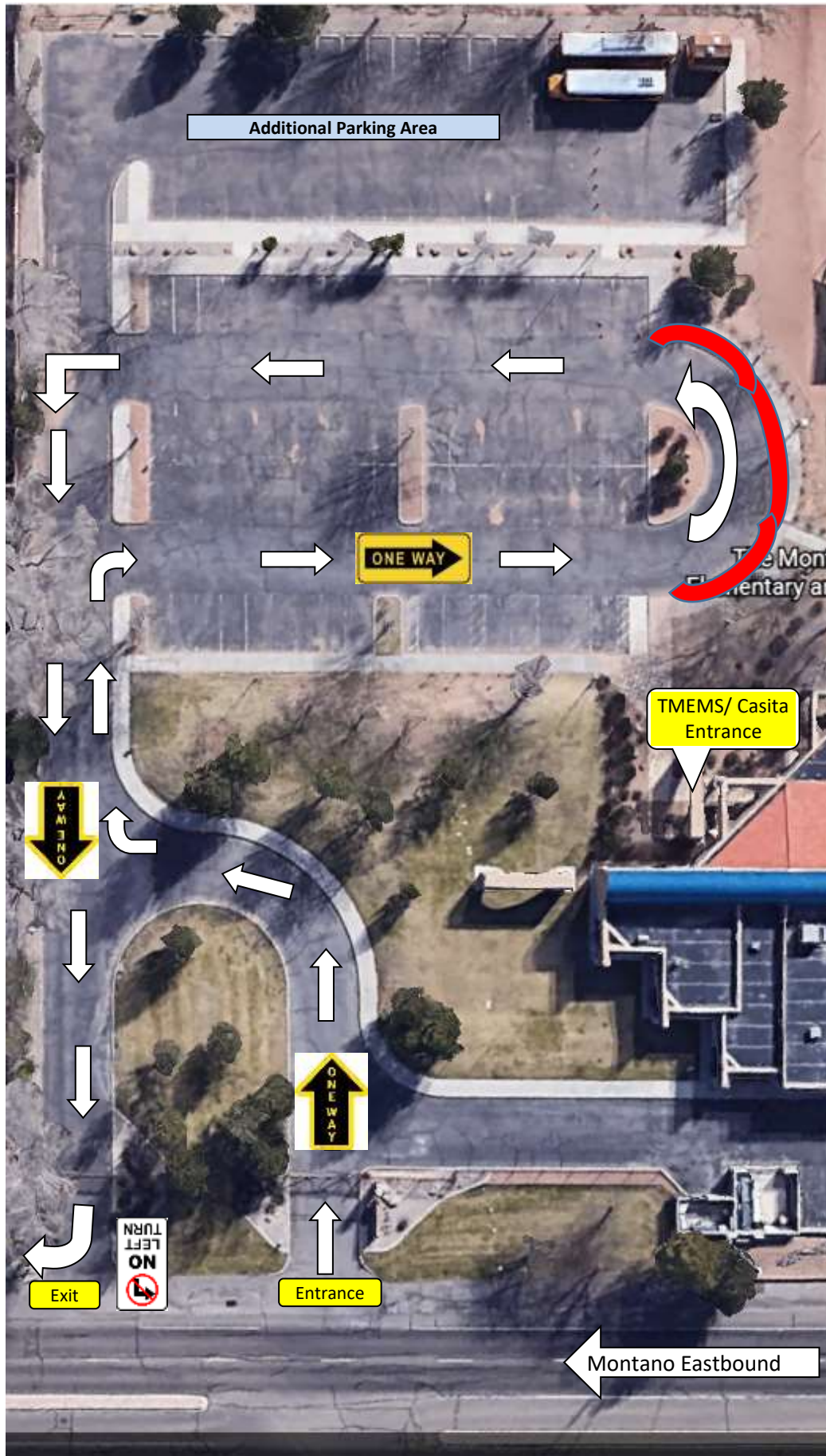


# TMEMS/Casita Montano Campus Student Drop-off Map

For all Montano Campus families for all levels, Pre-K – 8<sup>th</sup> grade, beginning April 5<sup>th</sup>, 2021.



## Drop-Off times:

**TMMS & siblings-** 8:15 – 8:30

**Students without TMMS siblings-** 8:40 – 9:00

You may drop off your TMMS, TMES, or Casita student in one of two ways, during the allotted times above:

### A. Quick Drop-off:

Drop your student off at the sidewalk on the **RED curb** (see map); please make sure they are on the sidewalk before you leave. (This method is for students that are ready to exit the car **quickly**. If you have to exit the car to help your child out in any way, please use the other option below.)

### B. Park to help/Need more time:

Pull into one of the many **spots** that are along the sidewalk and ensure your child is on the sidewalk before you leave. (This method would be great for students that take a little longer to exit the car.)

Parents are **not** allowed to enter the building, however you are able to walk your child to staff members outside.

**Please note:** TMMS Students and their siblings may be dropped off beginning at 8:15 am sharp. TMES & Casita students who are not siblings of TMMS students may get dropped off beginning at 8:40 am sharp. If students are dropped off before those allowed times, they will be escorted to our Before Care program and parents will be billed accordingly.

**Before Care:** If you are utilizing our Before Care services, beginning at 6:45 am, please park your vehicle and walk in through the gate past the red curb. You will sign your child in at the Before & After Care room. After Care will be in the same room also. For more details about that program, see our website.